



MILES ESTATE AGENTS

37 Station Green Bishops Lydeard
Taunton TA4 3DL £260,000



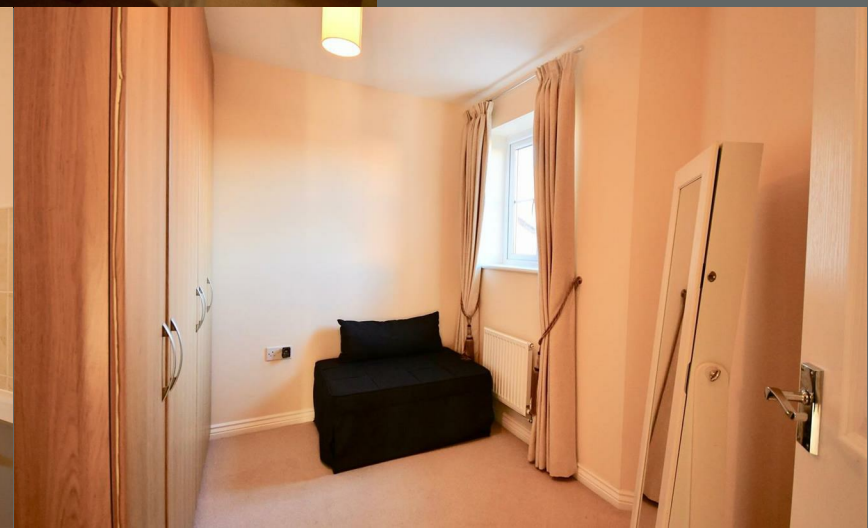
An immaculately presented 3 bed semi detached house on this small and popular Taylor Wimpey development on the edge of Bishops Lydeard close to the West Somerset Steam Railway and the fabulous Quantock Hills. Spacious kitchen/dining room, master bedroom with en suite, enclosed garden and off road parking. Early viewing recommended. Freehold with Estate Management charge of £397.92 pa Council Tax Band C EPC : C.





Features:

- Sitting room
- Spacious kitchen/dining room
- Useful utility / cloakroom
- Master bedroom with en suite
- 2 further good size bedrooms
- Family bathroom
- Enclosed garden
- Off road parking for 2 cars
- Freehold with Estate Management charge of £xxx pa
- Council Tax Band C
- EPC : C



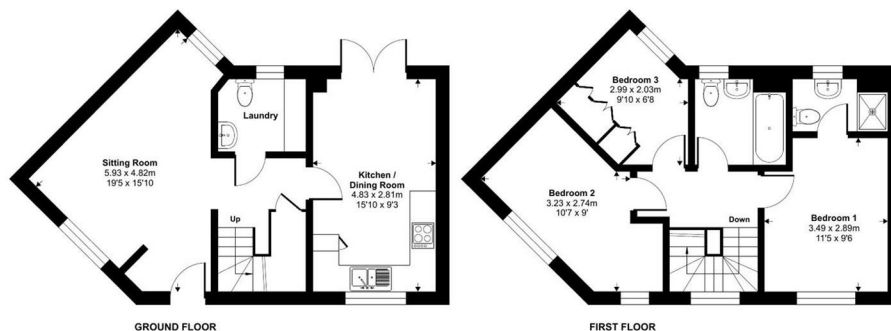
Station Green, Bishops Lydeard, Taunton, TA4

Approximate Area = 866 sq ft / 80.4 sq m

For identification only - Not to scale



Energy Efficiency Rating		
	Current	Potential
Very energy efficient - lower running costs		
(92 plus) A		91
(81-91) B		
(69-80) C		
(55-68) D		
(39-54) E		
(21-38) F		
(1-20) G		
Not energy efficient - higher running costs		
England & Wales	EU Directive 2002/91/EC	



Floor plan produced in accordance with RICS Property Measurement 2nd Edition, incorporating International Property Measurement Standards (IPMS2 Residential). © richcom 2025. Produced for Miles Alexander Limited T/A Miles Estate Agents. REF: 1383415



Viewings strictly through the selling agents:

Miles Estate Agents

2 Piffin Lane, Bishops Lydeard, Taunton, Somerset, TA4 3AS

Tel: 01823 470 500

lydeard@milesestateagents.co.uk

www.milesestateagents.co.uk

rightmove

OnTheMarket.com

MILES ESTATE AGENTS

BEST
ESTATE AGENT GUIDE
2019 : EXCEPTIONAL
SALES